

MONTHLY MEMBERSHIP PROGRESS REPORT

District 11 C1

Results as of: 4/30/2025

GMT:

LOCATION MICHIGAN

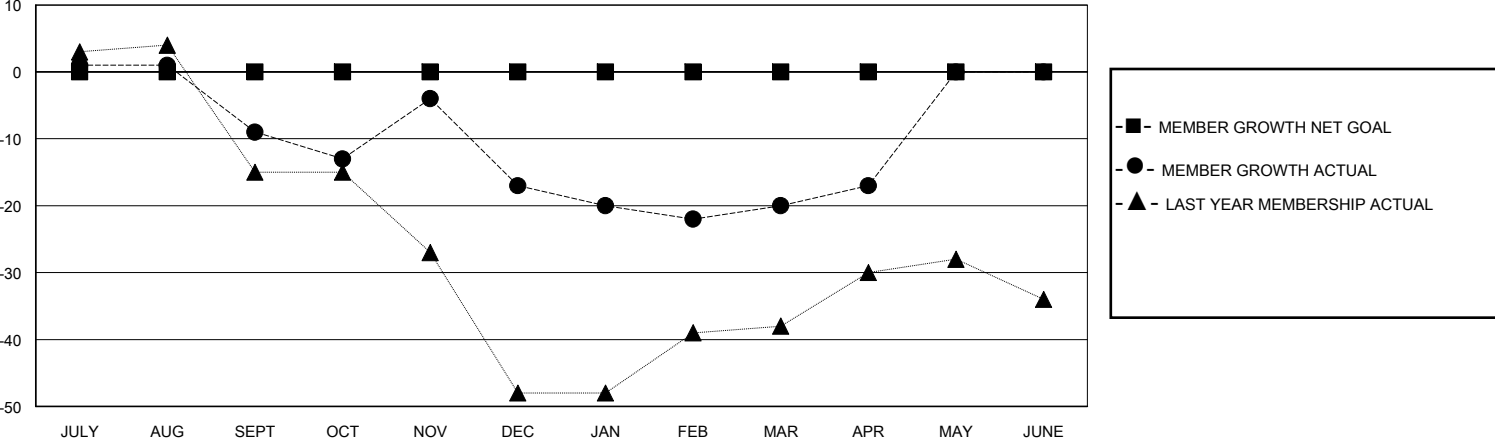
GMT CA

Clubs				Members			
RESULTS FOR 2024-2025				RESULTS FOR 2024-2025			
QUARTER	NEW CLUB GOAL	NEW CLUBS	DROPPED CLUBS	QUARTER	MEMBER GROWTH NET GOAL	MEMBER GROWTH ACTUAL	DROPPED MEMBERS ACTUAL (including transfers)
JULY/AUG/SEPT	0	0	0	JULY/AUG/SEPT	0	13	20
OCT/NOV/DEC	0	0	0	OCT/NOV/DEC	0	16	22
JAN/FEB/MAR	0	0	0	JAN/FEB/MAR	0	15	16
APR/MAY/JUNE	0	0	0	APR/MAY/JUNE	0	4	1

GOALS AND ACTUAL NEW CLUBS CUMULATIVE



GOALS AND ACTUAL MEMBERS CUMULATIVE



DROPPED CLUBS: 0	13 CLUBS OF 25 ADDED 1 OR MORE NEW MEMBERS	<u>GENDER DISTRIBUTION</u> MALE 466 (65.36%) FEMALE 247 (34.64%)
<u>DROPPED MEMBERS</u> DECEASED 10 CLUB CANCELLED 0 OTHER 49 TOTAL 59	<a href="#">CLICK HERE FOR CUMULATIVE MEMBERSHIP DATA</a>	TOTAL FAMILY UNIT MEMBERS 0 FAMILY MEMBERS PAYING HALF DUES 0